

AARON | S440

Pio & Tito Toso | 2020



AARON

Pio & Tito Toso | 2020

It was born generous, attentive and dynamic. You could call it a friend, one of the family. It was born double, like the double "A" in its name. AARON, a stool and a table all in one. It is an elegant and functional solution for all contexts, reducing space and valuing privacy. It has an embracing seat and a metal core which gives rise to a column that becomes a swivel tabletop. At different heights, with or without a footrest, AARON is the ideal solution for all work, meeting and relaxation needs. The designers who started this small revolution in the world of Lapalma stools are the Venetian brothers PIO&TITOTOSO. A story of complicity and understanding. A dual story. A great idea.

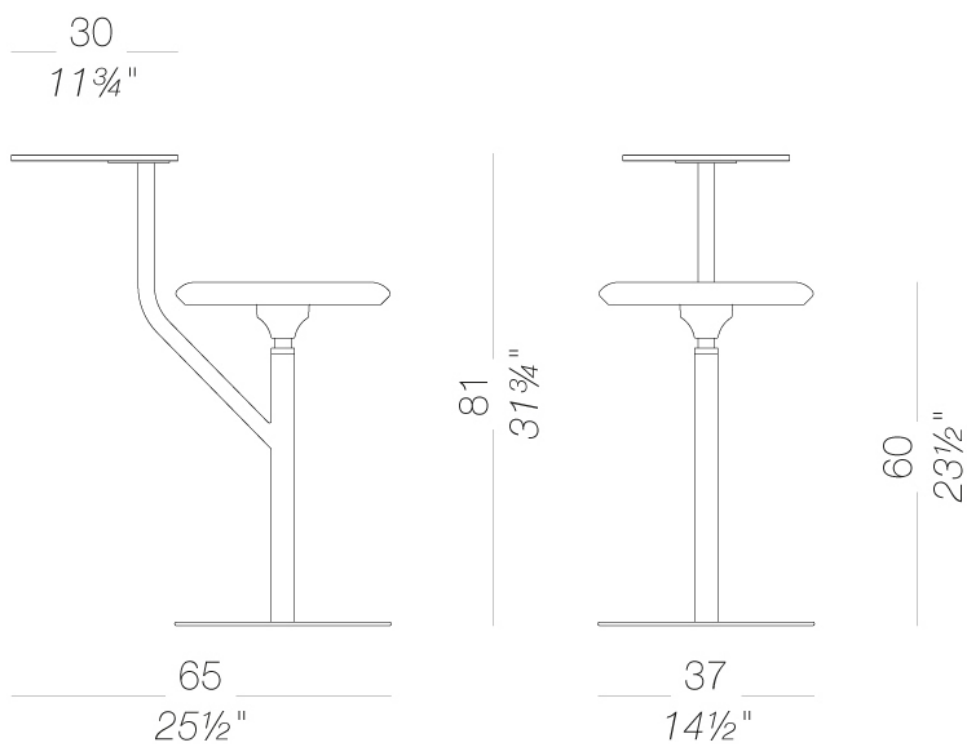


AARON

Pio & Tito Toso | 2020

| S440 stool with swivel table top h60

Stool with base in powder coated steel. Swivel seat upholstered with fire retardant moulded foam covered with fabric, ecoleather or leather and off-centre pivoting tablet. Felt under the base. Also available with small base for floor fixing.



AARON | S440

Pio & Tito Toso | 2020

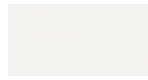
frame



powder coating
pistacchio
1 Colors



powder coating
black
1 Colors



powder coating
white
1 Colors



powder coating
perla | outdoor
1 Colors



powder coating
celeste | outdoor
1 Colors



powder coating
mattone | outdoor
1 Colors



powder coating
oliva
1 Colors



powder coating
tortora | outdoor
1 Colors

seat



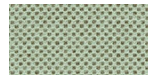
fabric
Main Line Flax -
Grade. B
57 Colors



fabric
Blazer - Grade. C
77 Colors



fabric
Chili - Grade. A
47 Colors



fabric
Umber - Grade. B
36 Colors



fabric
Nobel - Grade. C
30 Colors



fabric
Naveli - Grade. C
24 Colors



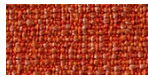
fabric
Fiocco - Grade. B
34 Colors



fabric
Atrium - Grade. C
16 Colors



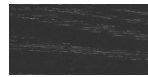
fabric
Panama - Grade. A
48 Colors



fabric
Sorrento - Grade. B
22 Colors



wood
natural ash
1 Colors



wood
black open pore
1 Colors



fabric
Hallingdal 65 - Grade
C
58 Colors



fabric
Canvas 2 - Grade C
45 Colors



fabric
Steelcut Trio 3 -
Grade D
54 Colors



fabric
Remix 3 - Grade C
72 Colors



fabric
Fiord 2 - Grade C
39 Colors



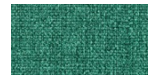
fabric
Divina MD - Grade D
27 Colors



fabric
Divina Melange 3 -
Grade D
38 Colors



fabric
Tonica 2 - Grade C
39 Colors



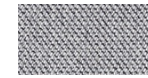
fabric
Medley - Grade A
37 Colors



fabric
Maya - Grade A
43 Colors



fabric
Jet - Grade A
66 Colors



fabric
Capture - Grade B
60 Colors



fabric
Crisp - Grade B
40 Colors



fabric
Iliris - Grade B
34 Colors



fabric
Steelcut 3 - Grade D
40 Colors



ecoleather
Valencia - Grade B
72 Colors



fabric
Grain - Grade. B
50 Colors

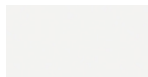


fabric
Re-wool - Grade C
24 Colors

top



powder coating
black
1 Colors



powder coating
white
1 Colors



powder coating
perla | outdoor
1 Colors



powder coating
celeste | outdoor
1 Colors



powder coating
mattone | outdoor
1 Colors



powder coating
oliva
1 Colors



powder coating
tortora | outdoor
1 Colors

AARON | S440

Pio & Tito Toso | 2020

consult the portfolio for the range of colors, fabrics, eco-leather, soft-leather.

use and maintenance instructions

Clean all parts in wood, leather, fabric and metal with a damp cloth or a diluted neutral cleaner. Do not use cleaners with alcohol, bleach, solvent or abrasive products. Any liquid spilt on the product must be wiped up immediately. When lifting or moving the product, hold it on the structure and not under the seat. The product should not be subjected to unbalanced weights, as it is designed for a proper rest on the foothold (on four legs or on the base). Our company relieves from any responsibility in case of damage caused to fragile floors. Avoid any improper use of the product: do not step on the product, on the footrest or on the armrests. Avoid any movements that could compromise the proper functionality of the product or the safety of the users. Wood and leather, being natural materials, could be easily damaged. Small impurities or imperfections are within quality standard range. Do not expose the product to weather conditions or atmospheric agents, nor to heat sources over 40°C. Also products for outdoor use could be afflicted by atmospheric agents. The product could undergo possible exterior changes due to particular exposure to heat, humidity and saltiness. An appropriate and frequent maintenance and cleaning of the product enhances its durability. The product could change colour and shade, if exposed to direct sunlight. Maintenance has to be carried out by experienced staff. Dispose of the package only after assembling the product, in order to avoid the loss of ironmongery and components. Once the product has been dismantled, the product itself or its components must be given to the public garbage disposal system, according to the legislation in force.